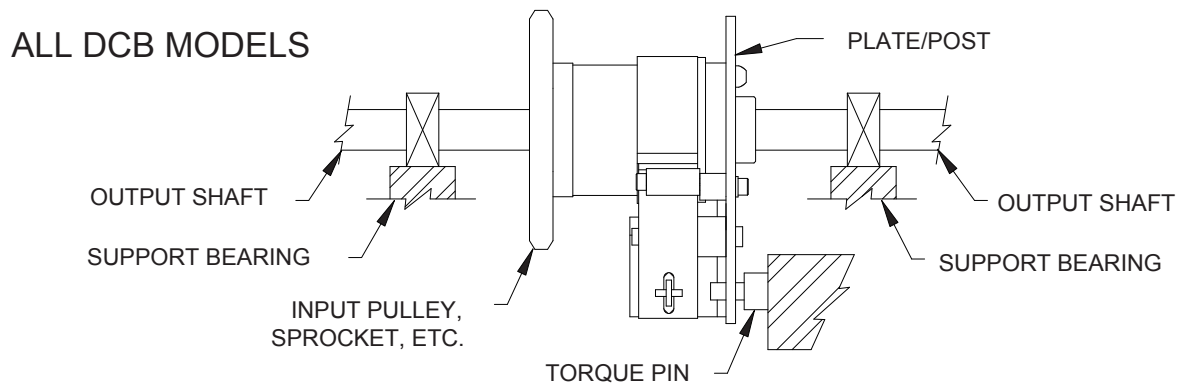


DCB & SUPER DCB INSTALLATION

DYNACORP WRAP SPRING PRODUCTS COME TO YOU FACTORY ASSEMBLED AND TESTED. NO INTERNAL ADJUSTMENTS ARE REQUIRED DURING INSTALLATION.

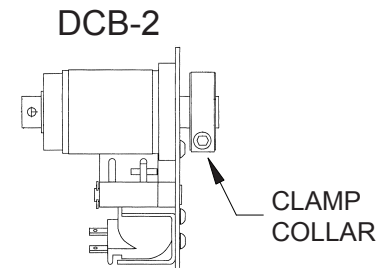
INSTALLATION

1. THE PLATE POST (SIDE PLATE ASSY) MUST BE ALLOWED TO FLOAT TO AVOID DAMAGING THE INTERNAL BEARINGS. THE PLATE ASSEMBLY CAN BE RESTRAINED FROM MOVEMENT BY A TORQUE PIN THROUGH THE SLOT OR AN ARM WITH SPHERICAL ROD ENDS ATTACHED TO ONE OF THE HOLES IN THE PLATE ASSY.
2. ALL WRAP SPRING CL/BRK PACKAGES MUST BE FULLY SUPPORTED BY A SHAFT GOING COMPLETELY THROUGH THE UNIT. IT IS SECURED TO YOUR SHAFT BY PINNING OR USE OF KEYS DEPENDING ON THE SIZE OF THE UNIT.
3. WHEN ASSEMBLING PULLEYS, SPROCKETS, ETC. TO THE INPUT HUB THE UNIT'S RADIAL BEARING LOAD CAPACITY MUST NOT BE EXCEEDED (SEE CHARTS IN CATALOG). COUNTERBORING OR BEARING MOUNTING AND PINNING THE INPUT MEMBER TO THE CLUTCH BRAKE MAY BE NECESSARY.



DCB-2 OUTPUT POSITION ADJUSTMENT

DCB-2 FEATURES A SPLIT OUTPUT AND CLAMP COLLAR TO SECURE TO YOUR SHAFT. ROTATE YOUR SHAFT AS REQUIRED AND TIGHTEN THE COLLAR SCREW TO 32 IN-LBS TORQUE.



DCB-4 / DCB-8 OUTPUT POSITION ADJUSTMENT

DCB-4 AND LARGER OFFER A SPLINED CAM STYLE STOP COLLAR WHICH ALLOWS YOU TO REPOSITION THE OUTPUT RELATIVE TO SHAFT AND OR KEYWAY PLACEMENTS. STANDARD STOP COLLAR POSITIONING INCREMENTS ARE LISTED IN THE TABLE BELOW.

TO ADJUST THE STOP COLLAR, REMOVE THE RETAINING RING, SLIDE THE CAM OFF THE SLEEVE, ROTATE THE CAM TO THE DESIRED POSITION, SLIDE THE CAM BACK ONTO THE SLEEVE, AND REPLACE THE RETAINING RING.

OUTPUT POSITION ADJUSTMENTS

DCB-2	INFINITE - CLAMP COLLAR
DCB-4	2.4° ADJUSTABLE - 150 POSITIONS
DCB-5, SUPER DCB-5	1.8° ADJUSTABLE - 199 POSITIONS
DCB-6, SUPER DCB-6	1.8° ADJUSTABLE - 200 POSITIONS
DCB-8, SUPER DCB-8	1.6° ADJUSTABLE - 220 POSITIONS

