

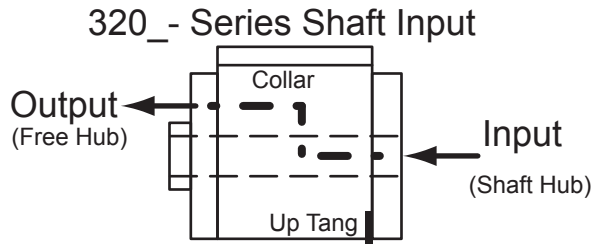
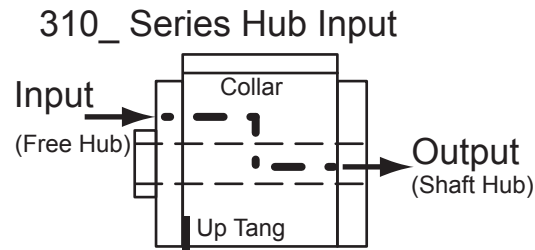
SC-2 , SC-4 and SC-5

Drive Media is attached to the Free Hub by either face mounting or pressing to Pilot diameter. Free hubs can be drilled and tapped for mounting to face. The shaft hub is pinned or set screwed to your shaft.

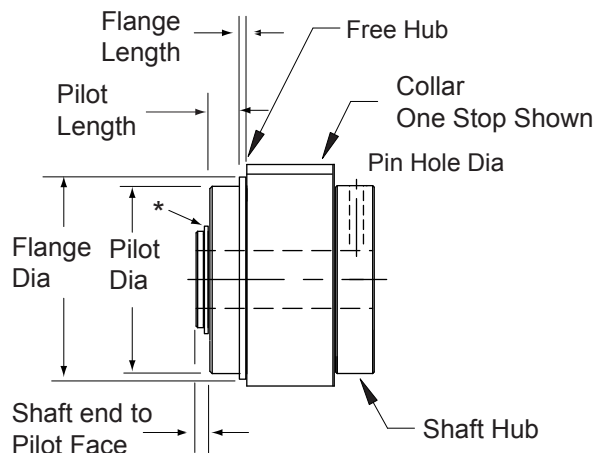
The input can be the Free Hub or the Shaft that is selected when ordering. Rotation is determined by viewing from the Free/Pilot hub end.

"SS" and "SR" - Spring Up Tang is always located on the Input End.

"SR" - Spring will have a Down Tang (SC-4 and SC-5) or Out Tang (SC-2) in the Output End.



Model	Pilot Dia.	Pilot Length	Flange Dia.	Flange Length	*Ring Dia Clearance	Pin Hole Dia	Shaft End to Pilot Face	Replacement Retaining Ring
SC-2	.8765 .8775	.245 .247	15/16	.063 .071	.59	8-32 UNC-2B	.084 .093	5100-37
SC-4	1.1275 1.1280	.245 .255	1-1/4	.058 .068	.65	.124 .129	.092 .096	5108-50
SC-5	1.5020 1.5035	.245 .255	1-9/16	.113 .126	.80	.185 .192	.089 .121	5108-62



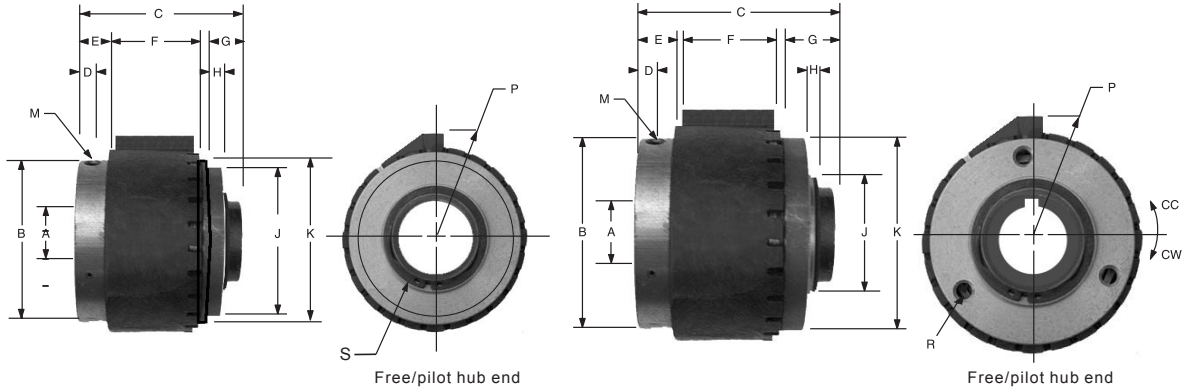
Wrap Spring Clutches

Spring Clutch

Product Functions: Overrunning  - Start-Coast  - Single Revolution 

Models

- SC-2
- SC-4
- SC-5
- SC-6
- SC-8



SC-2, SC-4 and SC-5

SC-6 and SC-8

Standard Mounting Dimensions (inches)

Model	A ¹	Keyway	B	C	D	E	F	G	H	J	K	M ²	P	R			S ⁴	Torque in. lbs.	Max. RPM
														Dia.	No. of Holes	Bolt Circle			
SC-2	.250	None	.94	1.25	.16	.34	.49	.93	.24	.8775/.8765	.94	8-32	.57	—	—	—	.59	25	1800
SC-4	.375	None	1.25	1.38	.14	.28	.67	.93	.25	1.1275/1.1280	1.25	.125	.72	—	—	—	.65	125	1200
SC-5	.500	None	1.56	1.88	.14	.38	1.00	.93	.25	1.5035/1.5020	1.56	.188	.85	—	—	—	.80	250	750
SC-6	.750	3/16x3/32	2.44	2.31	.28	.50	.866	.41	.125	1.562/1.559	2.437	1/4-20	1.50	1/4-20	3	2.062	—	500	500
	1.000	None	2.44	2.31	.28	.50	.866	.41	.125	1.562/1.559	2.437	1/4-20	1.50	1/4-20	3	2.062	—	500	500
SC-8	1.000	1/4x1/8	4.00	3.50	.30	.60	1.98	.88	.18	2.374/2.372	4.025	3/16-16	2.00	5/16-18	6	3.375	—	2500	300
	1.250 ³	5/16x5/32	4.00	3.50	.30	.60	1.98	.88	.18	2.374/2.372	4.025	3/16-16	2.00	5/16-18	6	3.375	—	2500	300
	1.375	5/16x5/32	4.00	3.50	.30	.60	1.98	.88	.18	2.374/2.372	4.025	3/16-16	2.00	5/16-18	6	3.375	—	2500	300
	1.500 ³	3/8x1/8	4.00	3.50	.30	.60	1.98	.88	.18	2.374/2.372	4.025	3/16-16	2.00	5/16-18	6	3.375	—	2500	300

NOTE: Rotation is determined by looking at the free/pilot hub end.

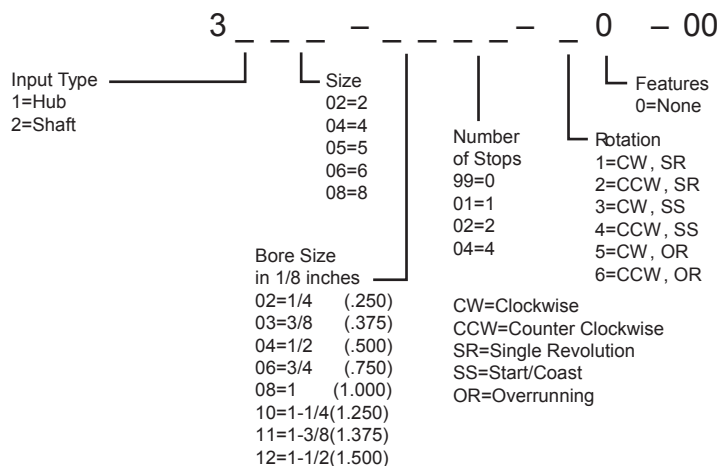
¹ Tolerance is +.0005 / +.0030

² Pin diameter shown on sizes SC-4 and SC-5.

³ SC-8 Standard bores.

⁴ Retaining ring clearance diameter.

How to Order:



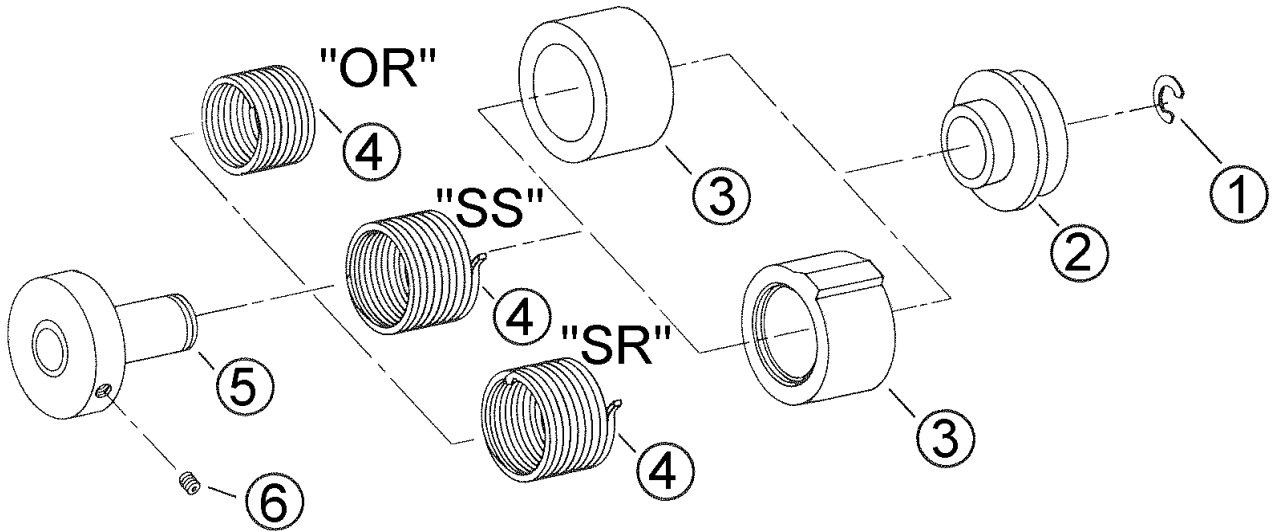
SR units (Brake Torque is 10% of Maximum Torque).

Example

SC-6 clutch, hub input, 3/4" bore, 2 stops, clockwise single revolution. Part No. 3106-0602-10-00.

Wrap Spring Clutches – Replacement Parts

SC Spring Clutch Replacement Parts



Item	Model SC-2 Part No.	Model SC-4 Part No.	Model SC-5 Part No.	Model SC-6 Part No.	Model SC-8 Part No.	Description
1	040-0310	D748-1-0027	D748-1-0030	D748-1-0038	D748-1-0039	Retaining Ring
2	002-4218	102335-1	102347	D540-6-0009	D540-8-0014	Free / Pilot Hub
3	002-4236	103398	103393	D287-6-0001	100999	Overrunning Collar
	002-4317	102336-5	103392-5	D266-6-0301	100784-5	1 Stop Collar
	002-4319	102336-6	103392-6	D266-6-0302	100784-6	2 Stop Collar
	002-4320	102336-8	103392-8	D266-6-0304	100784-8	4 Stop Collar
4	002-2028	D808-4-0066	D808-5-0001	D808-6-0001	D808-8-0003	SR Drive Spring LH ¹
	002-2029	D808-4-0059	D808-5-0002	D808-6-0002	D808-8-0004	SR Drive Spring RH ²
	002-2024	D808-4-0066-1	D808-5-0001-1	D808-6-0007	D808-8-0003-1	SS Drive Spring LH ¹
	002-2025	D808-4-0059-1	D808-5-0002-1	D808-6-0008	D808-8-0004-1	SS Drive Spring RH ²
	002-2026	D808-4-0066-2	D808-5-0001-2	D808-6-0009	D808-8-0003-2	OR Drive Spring LH ¹
	002-2027	D808-4-0059-2	D808-5-0002-2	D808-6-0010	D808-8-0004-2	OR Drive Spring RH ²
5	002-5409	103131	102494	-	-	Shaft Hub Assembly
	-	-	-	D824-6-0052	-	3/4 Bore Shaft Hub Assembly
	-	-	-	D824-6-0056	100996-4	1 Bore Shaft Hub Assembly
	-	-	-	-	100996-5	1-1/4 Bore Shaft Hub Ass'y
	-	-	-	-	100996-6	1-3/8 Bore Shaft Hub Ass'y
-	-	-	-	100996-1	1-1/2 Bore Shaft Hub Ass'y	
6	040-0432	-	-	100987	101001	SetScrew

¹ CW Hub Input / CCW Shaft Input

² CCW Hub Input / CW Shaft Input