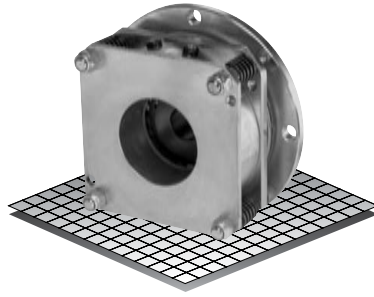


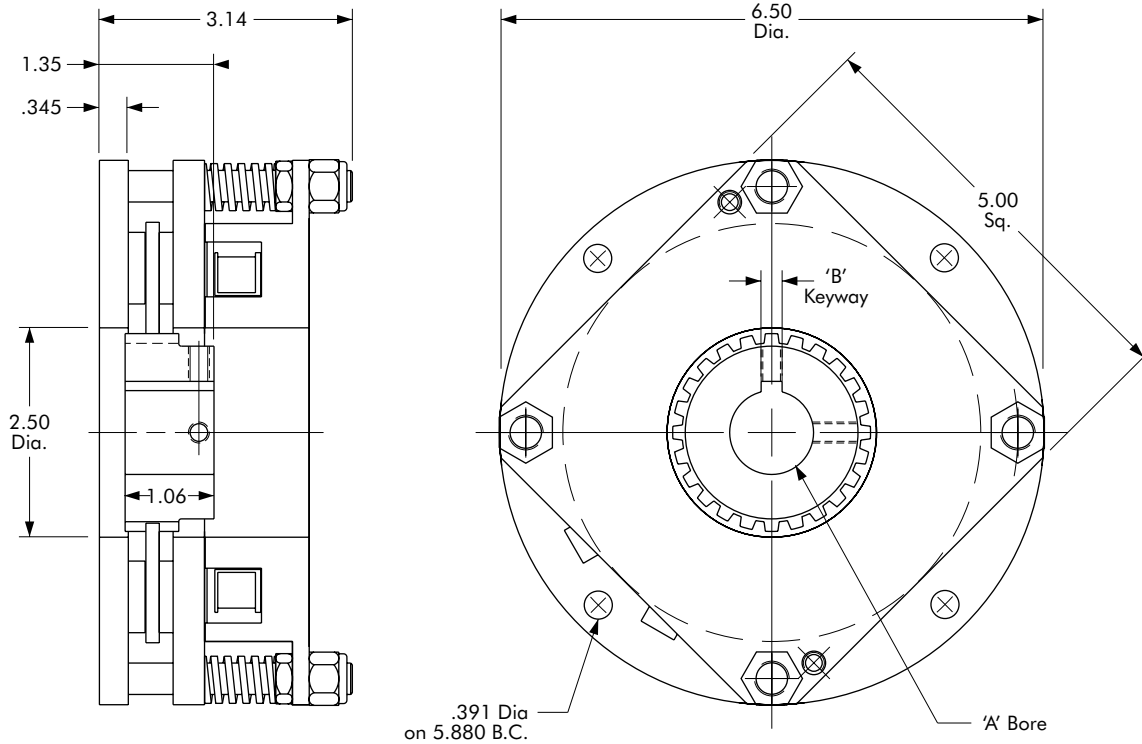
Spring Set Holding Brake

Model

● 305



- ▶ Factory Assembled and Tested
- ▶ Spline Drive



| Bore "A" | "B" Keyway |
|----------|-------------|
| 3/4" | .187 x .094 |
| 7/8" | .187 x .094 |
| 1" | .250 x .125 |
| 1-1/4" | .250 x .125 |

Technical Data

| Model No. | Wt. Lbs. | Static Torque in. lb. | Coil Voltage vdc | * Rated Current amps |
|-----------|----------|-----------------------|------------------|----------------------|
| 305 | 9.75 | 425 | 90 | .427 |

* Rated Current for 90v.

Customer must maintain:

1. Concentricity between mounting flange and shaft within .006.
2. Perpendicularity between mounting surface and shaft within .006.

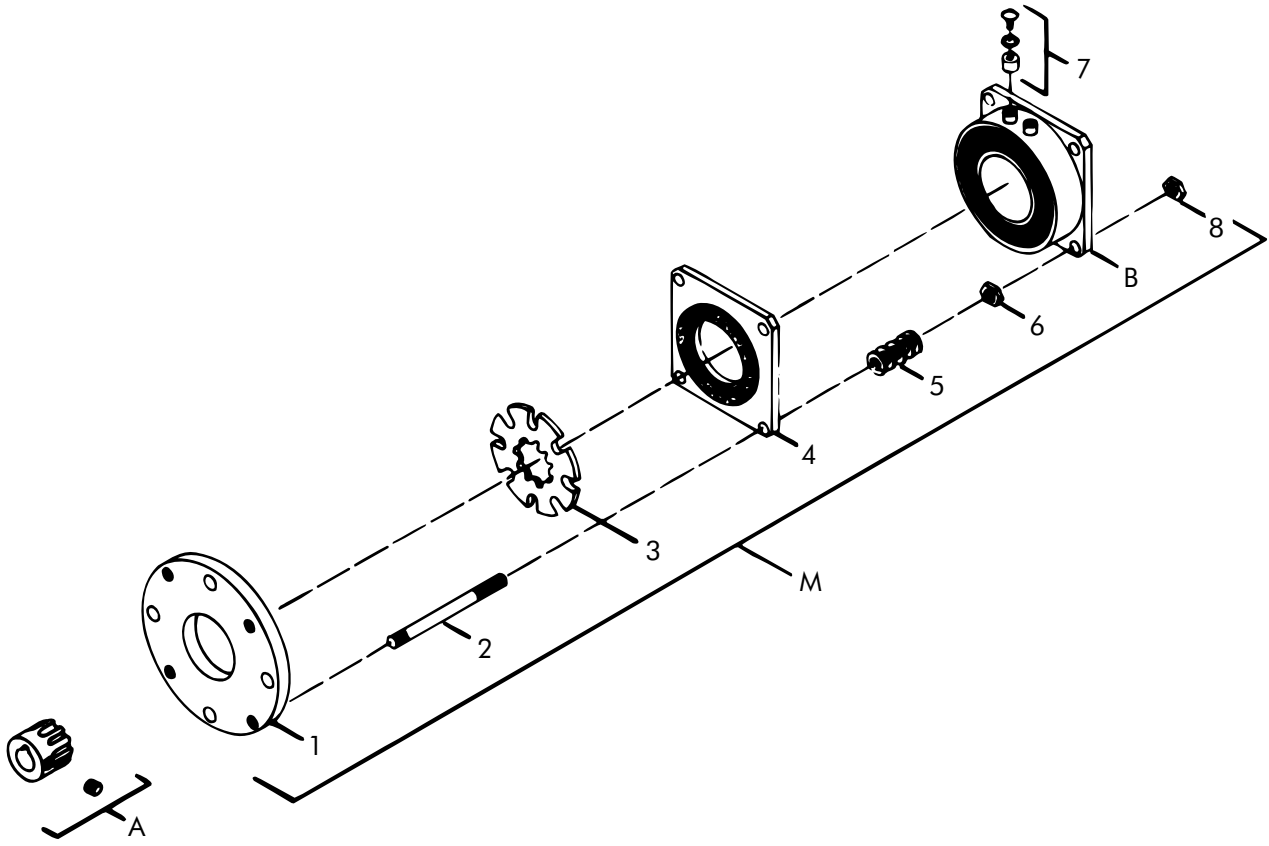
Order Parts for Assembly No. FC305069

| Item | Qty. | Description | Model No. 305 |
|------|------|---|---|
| A | 1 | Rotor Hub Assembly 3/4" Plain Bore 3/4" Bore 7/8" Bore 1" Bore 1-1/4" Bore | 305454-PB 305453-11 305453-12 305453-13 305453-15 |
| M | 1 | Spring Set Holding Brake 24 Volts 90 Volts 36 Volts | 305070-3 305070-4 305070-5 |

To order, specify: 1, Spring Set Holding Brake of required voltage
1, Rotor Hub Assembly of required bore size.

For controls, see Section K.

Spring Set Holding Brake – Replacement Parts



Replacement Parts

| Item | Qty. | Description | Model No. |
|------|------|-----------------------|-----------|
| B | 1 | Field Magnet Assembly | 305 |
| | | 24 Volts | 305333-2 |
| | | 90 Volts | 305334-2 |
| | | 36 Volts | 305335-2 |
| 1 | 1 | Back Plate | 305810 |
| 2 | 4 | Studs | 326602 |
| 3 | 1 | Rotor (24 Teeth) | 305811 |
| 4 | 1 | Flapper | 305812 |
| 5 | 4 | Springs | 326795 |
| 6 | 4 | Nuts | DY-358 |
| 7 | 1 | Accessory Kit | 326146-1 |
| 8 | 4 | Nuts | RY-20135 |