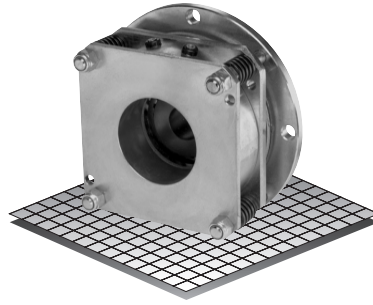


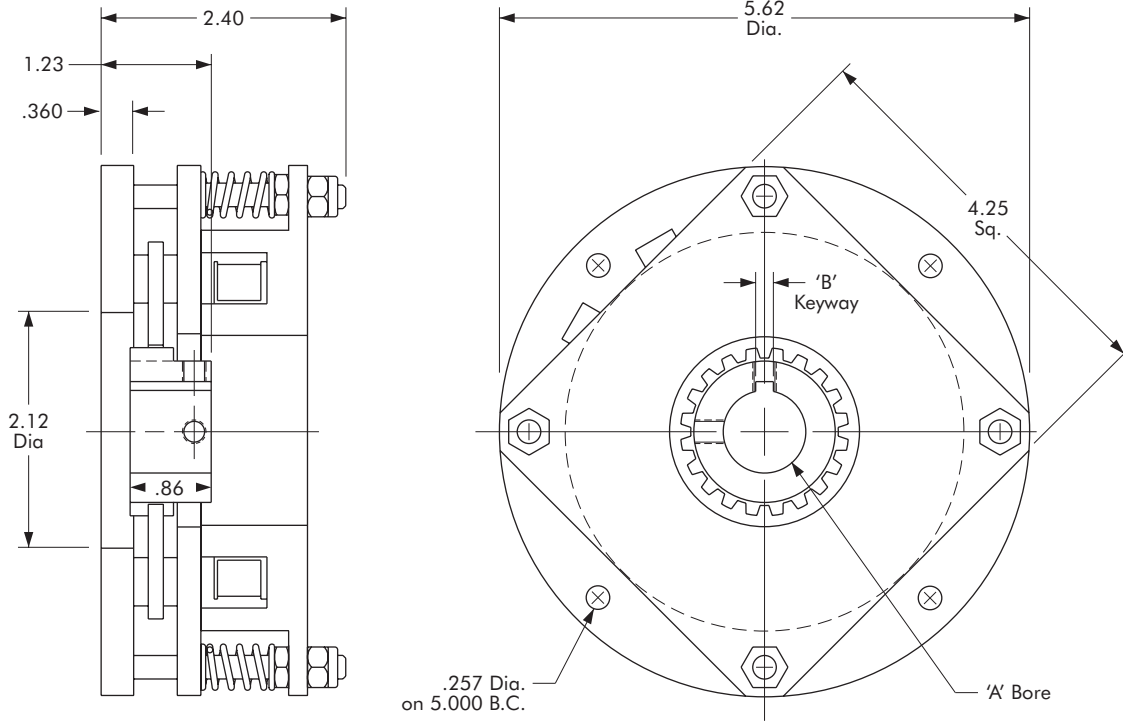
Spring Set Holding Brake

Model

● 304



- ▶ Factory Assembled and Tested
- ▶ Spline Drive



| Bore "A" | "B" Keyway |
|----------|-------------|
| 1/2" | None |
| 3/4" | .187 x .094 |
| 7/8" | .187 x .094 |
| 1" | .250 x .125 |

Technical Data

| Model No. | Wt. Lbs. | Static Torque in. lb. | Coil Voltage vdc | * Rated Current amps |
|-----------|----------|-----------------------|------------------|----------------------|
| 304 | 6.12 | 225 | 90 | .17 |

* Rated Current for 90v.

Customer must maintain:

1. Concentricity between mounting flange and shaft within .006.
2. Perpendicularity between mounting surface and shaft within .006.

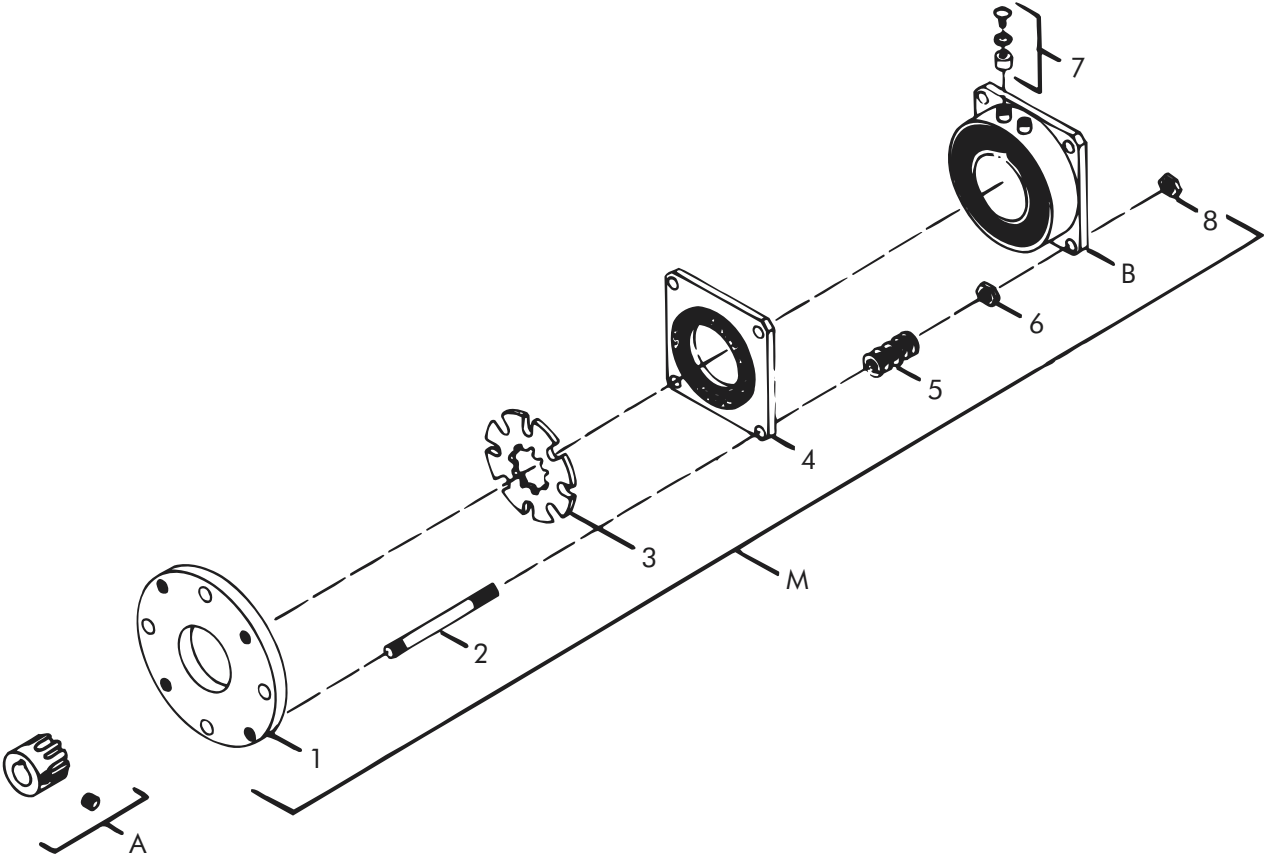
Order Parts for Assembly No. FC304069

| Item | Qty. | Description | Model No. 304 |
|------|------|--|---|
| A | 1 | Rotor Hub Assembly 1/2" Plain Bore 3/4" Bore 7/8" Bore 1" Bore | 304466-PB 304465-9 304465-10 304465-11 |
| M | 1 | Spring Set Holding Brake 12 Volts 24 Volts 90 Volts | 304070-2 304070-3 304070-4 |

To order, specify: 1, Spring Set Holding Brake of required voltage
1, Rotor Hub Assembly of required bore size.

For controls, see Section K.

Spring Set Holding Brake – Replacement Parts



Replacement Parts

| Item | Qty. | Description | Model No. 304 |
|------|------|---|----------------------------------|
| B | 1 | Field Magnet Assembly 12 Volts 24 Volts 90 Volts | 304332-7 304333-7 304334-7 |
| 1 | 1 | Back Plate | 304810 |
| 2 | 4 | Studs | 326605 |
| 3 | 2 | Rotor (20 Teeth) | 304811 |
| 4 | 1 | Flapper | 304812-1 |
| 5 | 4 | Springs | RY-20153 |
| 6 | 4 | Nuts | DY-10830 |
| 7 | 1 | Accessory Kit | 326146-2 |
| 8 | 4 | Nuts | RY-20137 |