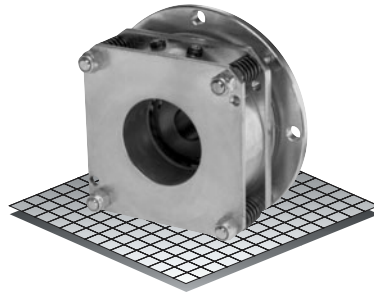


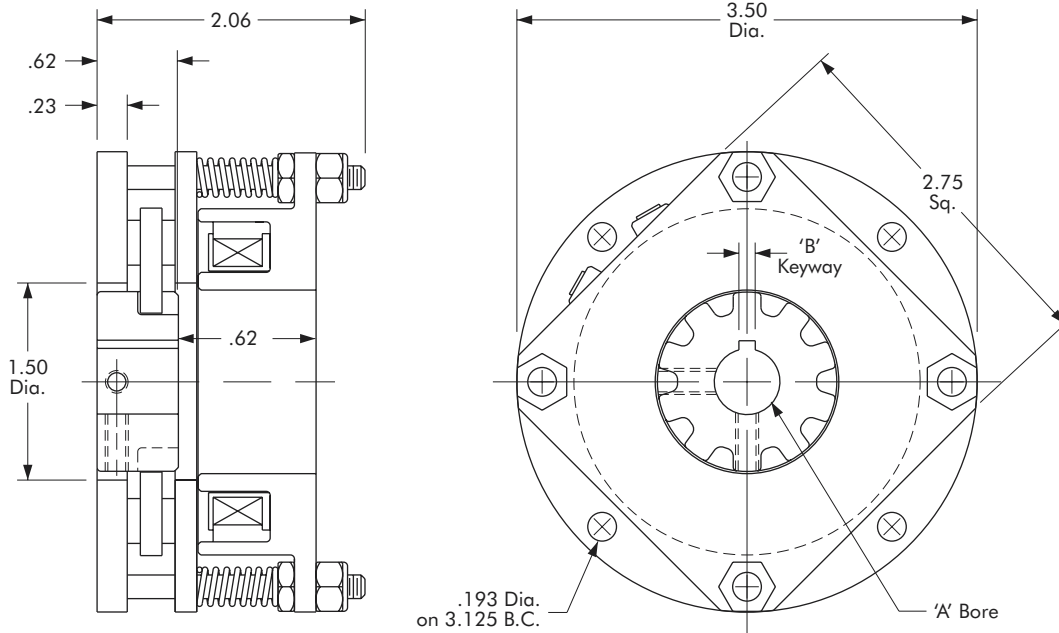
Spring Set Holding Brake

Model

● 303



- ▶ Factory Assembled and Tested
- ▶ Spline Drive



"A" Bore	"B" Keyway
3/8"	None
1/2"	.125 x .062
5/8"	.188 x .093
3/4"	.188 x .093

Technical Data

Model No.	Wt. Lbs.	Static Torque in. lb.	Coil Voltage vdc	* Rated Current amps
303	1.8	35	90	.157

* Rated Current for 90v.

Customer must maintain:

1. Concentricity between mounting flange and shaft within .006.
2. Perpendicularity between mounting surface and shaft within .006.

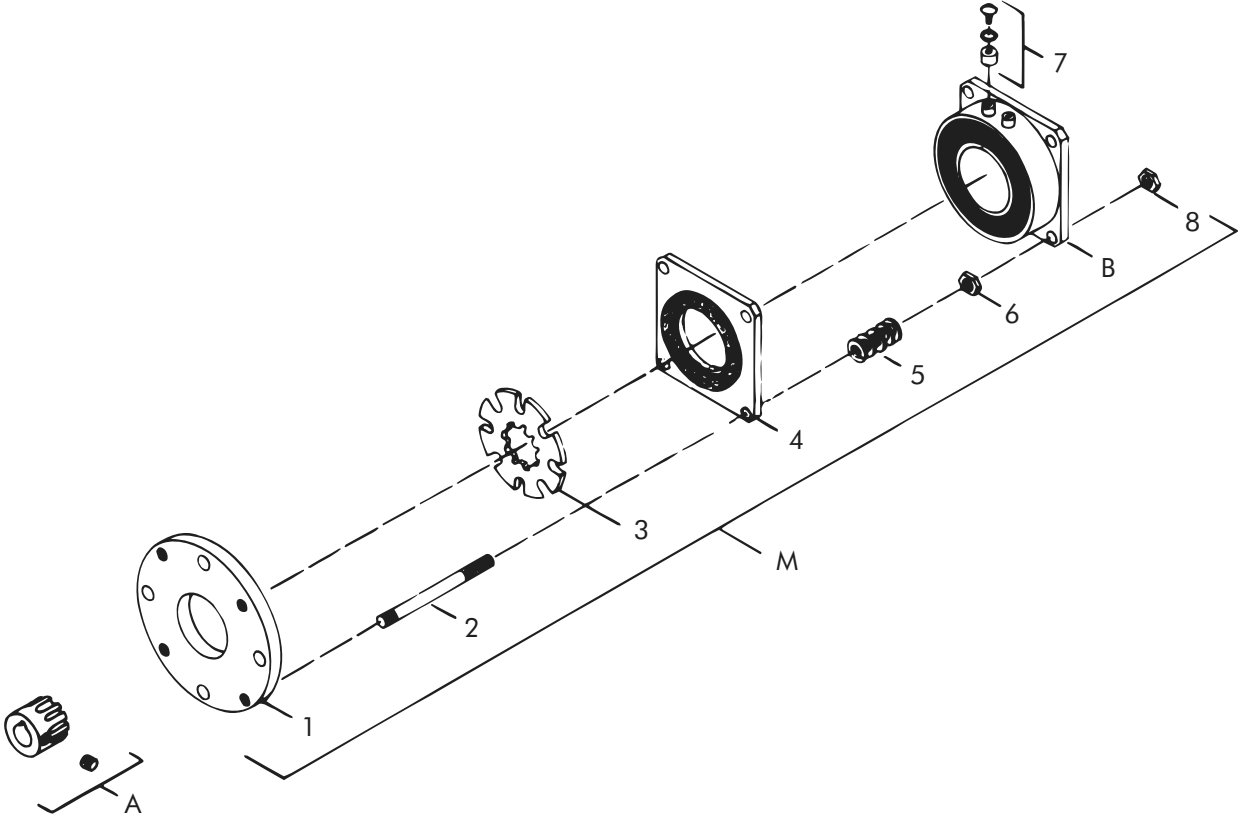
Order Parts for Assembly No. FC303069

Item	Qty.	Description	Model No.
			303
A	1	Rotor Hub Assembly	
		3/8" Plain Bore	303453-PB
		1/2" Bore	303451-3
		5/8" Bore	303451-5
		3/4" Bore	303453-8
M	1	Spring Set Holding Brake	
		24 Volts	303070-3
		90 Volts	303070-4

To order, specify: 1, Spring Set Holding Brake of required voltage
1, Rotor Hub Assembly of required bore size.

For controls, see Section K.

Spring Set Holding Brake – Replacement Parts



Replacement Parts

Item	Qty.	Description	Model No.
B	1	Coil Assembly 24 Volts 90 Volts	303333-1 303334-1
1	1	Back Plate	303810
2	4	Stud	326606
3	1	Rotor (10 Teeth)	303811
4	1	Flapper	303812-1
5	4	Springs	RY-20023
6	4	Nuts	DY-10403
7	1	Accessory Kit	326147
8	4	Nuts	RY-20139