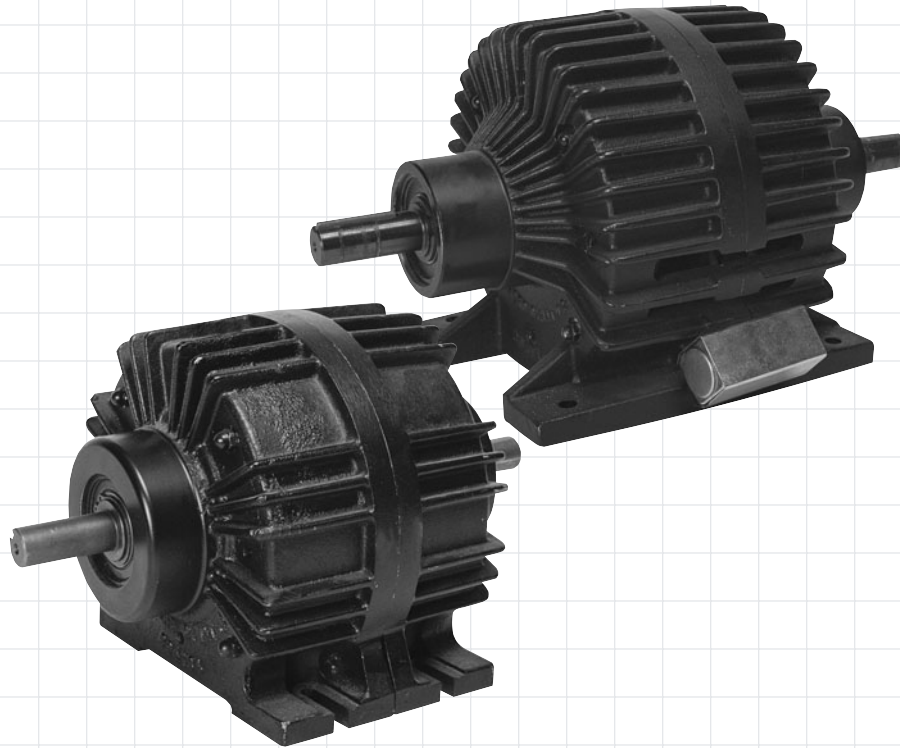


Foot Mounted Clutch-Brake Packages



Description

Dynacorp® foot mounted packages are factory assembled, tested and burnished. They are ready to be direct coupled to the load or belt, chain, gear, etc.

Section Index

Page

Products

Complete information is shown for each product; including specifications drawings, dimensions, parts list and information for ordering.

Model	Nominal Size	Static Torque (In.-Lbs.)	Maximum HP @ 1800 RPM	Page
CBP-400	4 inch	264	1-1/2	C-2
CBP-500	5 inch	684	3	C-4

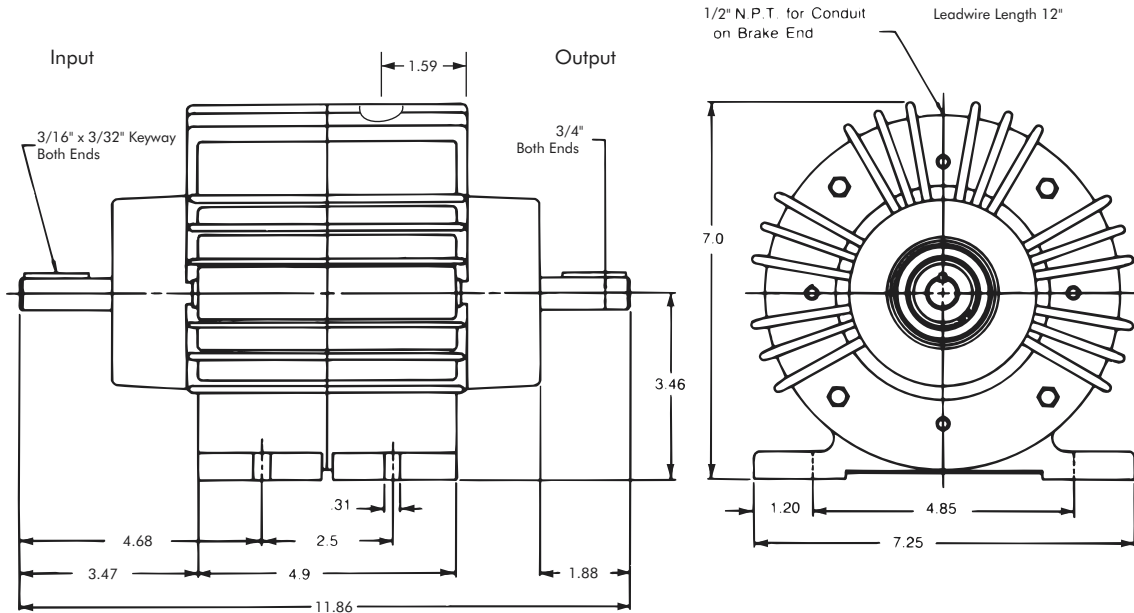
Foot Mounted Clutch-Brake Package

Model

● CBP-400



- ▶ Factory Assembled and Tested
- ▶ Spline Drive



Technical Data and Torque (In. Lb.)

Model No.	Wt. Lbs.	Static Torque in. lb.	Max. Speed RPM	Coil Voltage vdc	* Rated Current amps	RPM									
						0	300	600	900	1200	1500	1800	2400	3000	3600
CBP-400	23	264	3600	90	.12	264	216	192	180	168	156	156	144	132	120

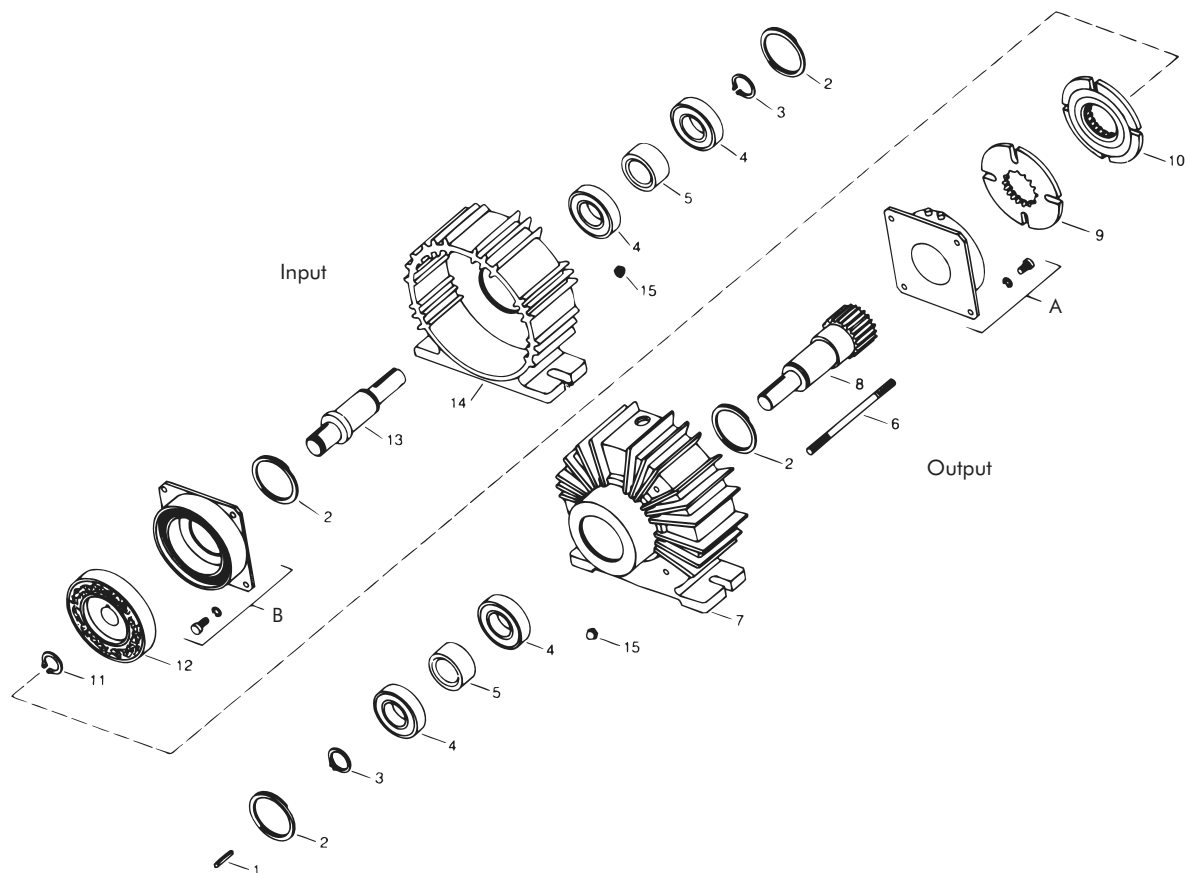
Refer to Section M for torque and heat dissipation curves.

* Rated Current for 90v.

	Model No.
	CBP-400
24 Volts	304184-7
90 Volts	304184-8

To order use number shown in Table above.
For controls, see Section K.

Foot Mounted Clutch-Brake Package – Replacement Parts



Replacement Parts

Item	Qty.	Description	Part No.	Item	Qty.	Description	Part No.
1	3	Key	DY-6529	15	8	Acorn Nuts	RY-20051
2	4	Retaining Ring	DY-10860	16	2	Magnet Accessory (not shown)	326146-2
3	2	Retaining Ring	DY-1102	17	2	Screw (not shown)	DY-497
4	4	Bearing	DY-11500	A	1	Magnet (Brake)*	
5	2	Bearing Spacer	326629			24 Volts	304353-16
6	4	Assembly Stud	626647			90 Volts	304354-16
7	1	Brake End Cap	650349-1	B	1	Field (Clutch)	
8	1	Splined Shaft	650340-3			24 Volts	304323
9	2	Armature Plate	304396-8			90 Volts	304324
11	1	Retaining Ring	RY-20033				
12	1	Rotor	304526-6				
13	1	Shaft	650348				
14	1	Clutch End Cap	650349-2				

* Units manufactured after April 2003 have -16 brake fields. Prior to that date, remove -16 from part number of brake field for service part.

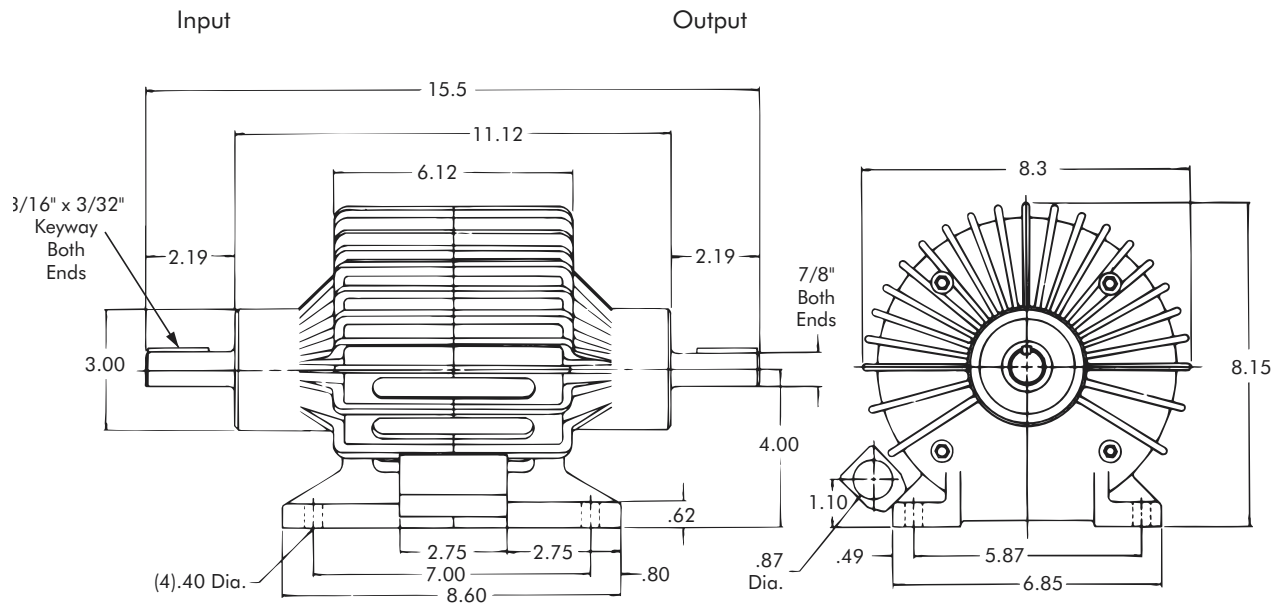
Foot Mounted Clutch-Brake Package

Model

● CBP-500



- ▶ Factory Assembled and Tested
- ▶ Spline Drive



Technical Data and Torque (In. Lb.)

Model No.	Wt. Lbs.	Static Torque in. lb.	Max. Speed RPM	Coil Voltage vdc	Rated Current amps		RPM									
					Clutch	Brake	0	300	600	900	1200	1500	1800	2400	3000	3600
CBP-500	35	684	3600	90	.39	.41	684	624	564	516	468	420	384	324	288	252

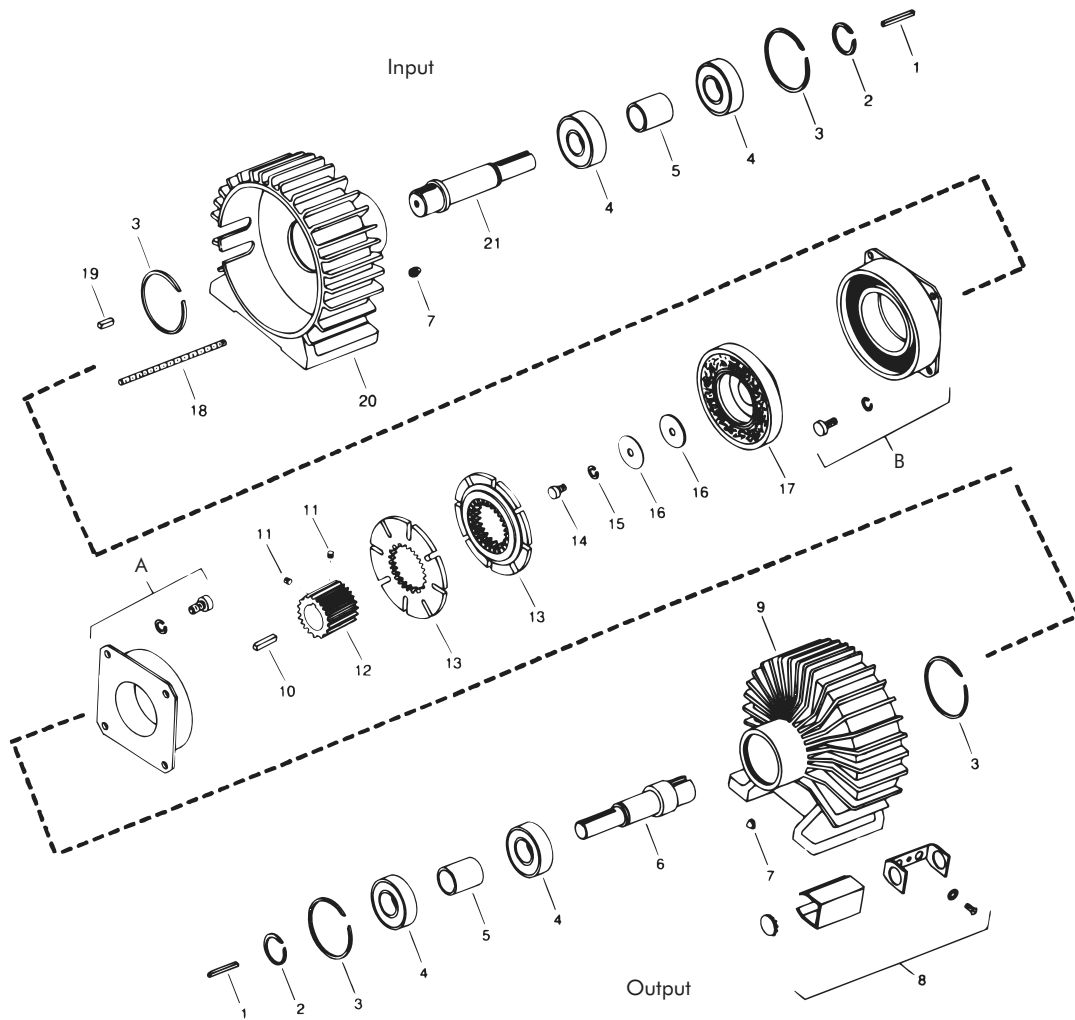
Refer to Section M for torque and heat dissipation curves.

* Rated Current for 90v.

	Model No.
	CBP-500
24 Volts	305184-3
90 Volts	305184-4

To order use number shown in Table above.
For controls, see Section K.

Foot Mounted Clutch-Brake Package – Replacement Parts



Replacement Parts

Item	Qty.	Description	Part No.	Item	Qty.	Description	Part No.
1	2	Key	DY-6666	18	4	Stud	326714
2	2	Retaining Ring	DY-5385	19	1	Key	DY-1830
3	4	Retaining Ring	DY-456	20	1	Clutch End Cap	650374-1
4	4	Bearing	DY-13191	21	1	Shaft (Clutch)	650348-1
5	2	Bearing Spacer	650118	22	8	Washer (not shown)	DY4472
6	1	Shaft (Brake)	650347-1	23	8	Capscrew (not shown)	DY10580
7	8	Nut	RY-20051	A	1	Magnet (Brake)*	
8	1	Magnet Accessory	326143			24 Volts	305353
9	1	Brake End Cap	650374-2			90 Volts	305354
10	1	Key	DY-772	B	1	Field (Clutch)	
11	2	Set Screw	DY-11906			24 Volts	305333-4
12	1	Splined Hub	305454-28			90 Volts	305334-4
13	2	Armature Plate Assembly	305396-1				
14	1	Screw	DY-10998				
15	1	Lock Washer	DY-4498				
16	2	Retainer Washer	326697				
17	1	Rotor Assembly	305555-10				

* Units manufactured before April 2003 have -4 brake fields. After that date, remove -4 from part number of brake field for service part.