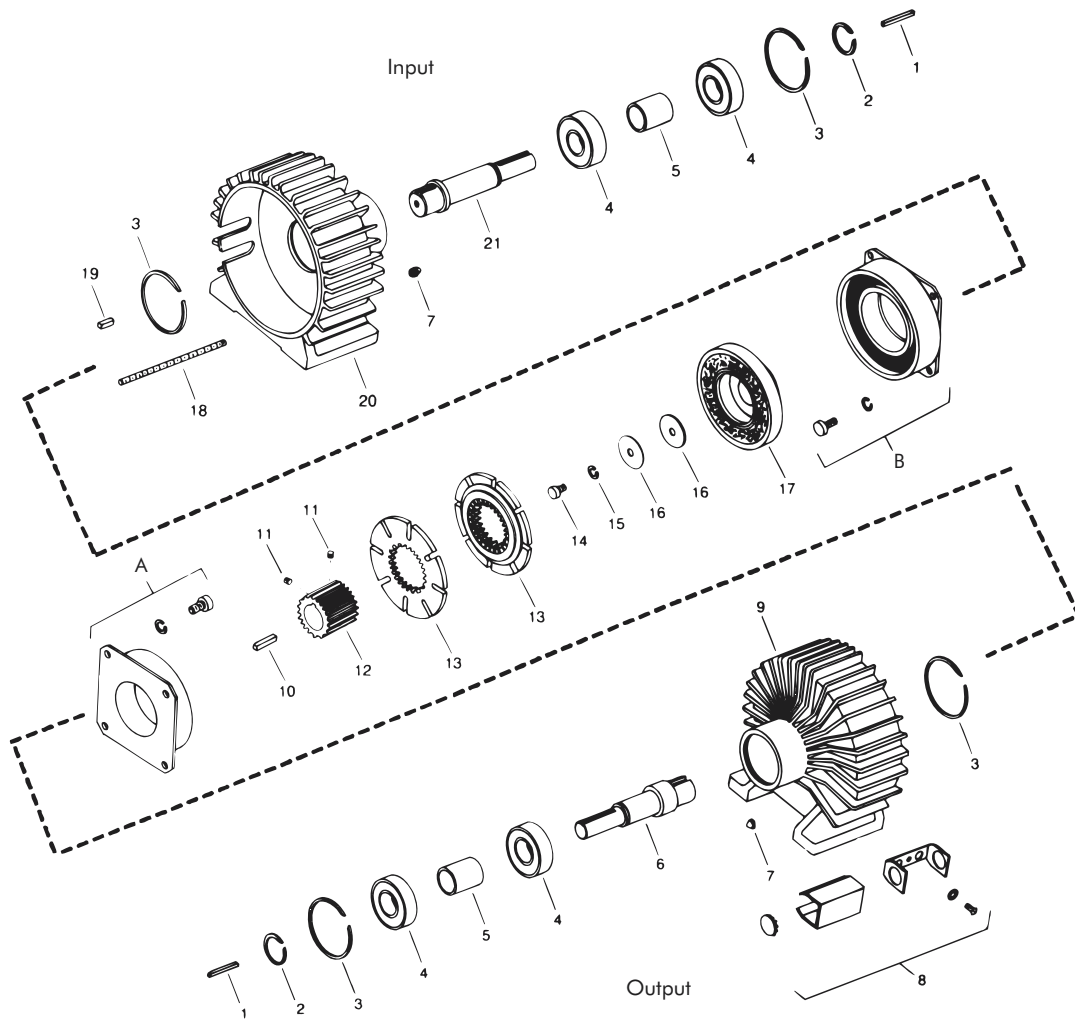




# Foot Mounted Clutch-Brake Package – Replacement Parts



## Replacement Parts

Item	Qty.	Description	Part No.	Item	Qty.	Description	Part No.
1	2	Key	DY-6666	18	4	Stud	326714
2	2	Retaining Ring	DY-5385	19	1	Key	DY-1830
3	4	Retaining Ring	DY-456	20	1	Clutch End Cap	650374-1
4	4	Bearing	DY-13191	21	1	Shaft (Clutch)	650348-1
5	2	Bearing Spacer	650118	22	8	Washer (not shown)	DY4472
6	1	Shaft (Brake)	650347-1	23	8	Capscrew (not shown)	DY10580
7	8	Nut	RY-20051	A	1	Magnet (Brake)*	
8	1	Magnet Accessory	326143			24 Volts	305353
9	1	Brake End Cap	650374-2			90 Volts	305354
10	1	Key	DY-772	B	1	Field (Clutch)	
11	2	Set Screw	DY-11906			24 Volts	305333-4
12	1	Splined Hub	305454-28			90 Volts	305334-4
13	2	Armature Plate Assembly	305396-1				
14	1	Screw	DY-10998				
15	1	Lock Washer	DY-4498				
16	2	Retainer Washer	326697				
17	1	Rotor Assembly	305555-10				

\* Units manufactured before April 2003 have -4 brake fields. After that date, remove -4 from part number of brake field for service part.