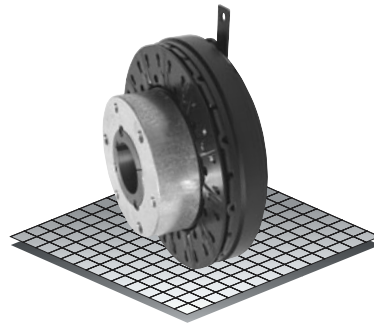


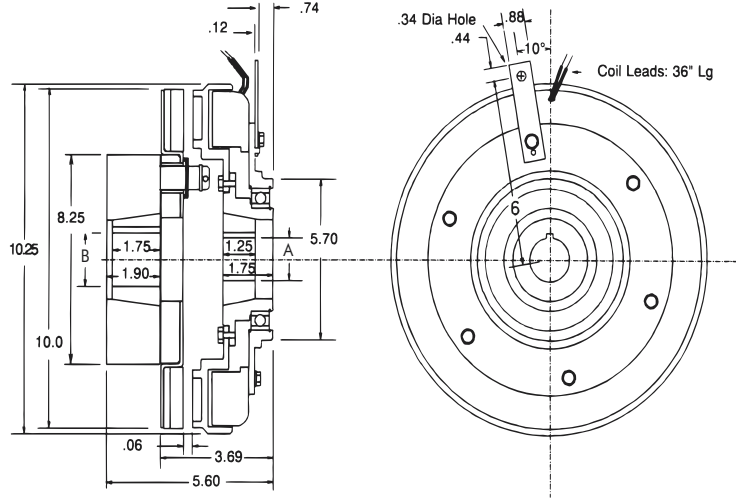
Clutch Coupling

Model

● 310



- ▶ Stationary Field
- ▶ Bearing Mounted
- ▶ Pin Drive



Bushing 2517

| Bore "B" | Keyway | Part No. |
|----------|-------------------|-------------|
| 1/2" | .500 .125 x .062 | 326039 - 1 |
| 9/16" | .562 .125 x .062 | 326039 - 2 |
| 5/8" | .625 .187 x .093 | 326039 - 3 |
| 11/16" | .687 .187 x .093 | 326039 - 4 |
| 3/4" | .750 .187 x .093 | 326039 - 5 |
| 13/16" | .812 .187 x .093 | 326039 - 6 |
| 7/8" | .875 .187 x .093 | 326039 - 7 |
| 15/16" | .937 .250 x .125 | 326039 - 8 |
| 1" | 1.000 .250 x .125 | 326039 - 9 |
| 1-1/16" | 1.062 .250 x .125 | 326039 - 10 |
| 1-1/8" | 1.125 .250 x .125 | 326039 - 11 |
| 1-3/16" | 1.187 .250 x .125 | 326039 - 12 |
| 1-1/4" | 1.250 .250 x .125 | 326039 - 13 |
| 1-5/16" | 1.312 .312 x .156 | 326039 - 14 |
| 1-3/8" | 1.375 .312 x .156 | 326039 - 15 |
| 1-7/16" | 1.437 .375 x .187 | 326039 - 16 |
| 1-1/2" | 1.500 .375 x .187 | 326039 - 17 |
| 1-9/16" | 1.562 .375 x .187 | 326039 - 18 |
| 1-5/8" | 1.625 .375 x .187 | 326039 - 19 |
| 1-11/16" | 1.687 .375 x .187 | 326039 - 20 |
| 1-3/4" | 1.750 .375 x .187 | 326039 - 21 |
| 1-13/16" | 1.812 .500 x .250 | 326039 - 22 |
| 1-7/8" | 1.875 .500 x .250 | 326039 - 23 |
| 1-15/16" | 1.937 .500 x .250 | 326039 - 24 |
| 2" | 2.000 .500 x .250 | 326039 - 25 |
| 2-1/16" | 2.062 .500 x .250 | 326039 - 26 |
| 2-1/8" | 2.125 .500 x .250 | 326039 - 27 |
| 2-3/16" | 2.187 .500 x .250 | 326039 - 28 |
| 2-1/4" | 2.250 .500 x .250 | 326039 - 29 |
| 2-5/16" | 2.312 .625 x .187 | 326039 - 30 |
| 2-3/8" | 2.375 .625 x .187 | 326039 - 31 |
| 2-7/16" | 2.437 .625 x .187 | 326039 - 32 |
| 2-1/2" | 2.500 .625 x .187 | 326039 - 33 |

Bushing 2012

| Bore "A" | Keyway | Part No. |
|----------|-------------------|-------------|
| 1/2" | .500 .125 x .062 | 326167 - 8 |
| 9/16" | .562 .125 x .062 | 326167 - 9 |
| 5/8" | .625 .187 x .093 | 326167 - 10 |
| 11/16" | .687 .187 x .093 | 326167 - 11 |
| 3/4" | .750 .187 x .093 | 326167 - 12 |
| 13/16" | .812 .187 x .093 | 326167 - 13 |
| 7/8" | .875 .187 x .093 | 326167 - 14 |
| 15/16" | .937 .250 x .125 | 326167 - 15 |
| 1" | 1.000 .250 x .125 | 326167 - 16 |
| 1-1/16" | 1.062 .250 x .125 | 326167 - 17 |
| 1-1/8" | 1.125 .250 x .125 | 326167 - 18 |
| 1-3/16" | 1.187 .250 x .125 | 326167 - 19 |
| 1-1/4" | 1.250 .250 x .125 | 326167 - 7 |
| 1-5/16" | 1.312 .312 x .156 | 326167 - 20 |
| 1-3/8" | 1.375 .312 x .156 | 326167 - 6 |
| 1-7/16" | 1.437 .375 x .187 | 326167 - 21 |
| 1-1/2" | 1.500 .375 x .187 | 326167 - 1 |
| 1-9/16" | 1.562 .375 x .187 | 326167 - 22 |
| 1-5/8" | 1.625 .375 x .187 | 326167 - 2 |
| 1-11/16" | 1.687 .375 x .187 | 326167 - 23 |
| 1-3/4" | 1.750 .375 x .187 | 326167 - 3 |
| 1-13/16" | 1.812 .500 x .250 | 326167 - 24 |
| 1-7/8" | 1.875 .500 x .250 | 326167 - 4 |
| 1-15/16" | 1.937 .500 x .187 | 326167 - 25 |
| 2" | 2.000 .500 x .187 | 326167 - 5 |

Technical Data and Torque (In. Lb.)

| Model No. | Wt. Lbs. | Static Torque in. lb. | Max. Speed RPM | Coil Voltage vdc | * Rated Current amps | RPM | | | | | | | |
|-----------|----------|-----------------------|----------------|------------------|----------------------|------|------|------|------|------|------|------|------|
| | | | | | | 0 | 300 | 600 | 900 | 1200 | 1500 | 1800 | 2400 |
| 310 | 29.4 | 3600 | 2400 | 90 | .59 | 3600 | 3144 | 2616 | 2088 | 1788 | 1596 | 1416 | 1044 |

* Rated Current for 90v.

Refer to Section M for torque and heat dissipation curves. Customer must maintain concentricity between shafts within .010.

Order Parts for Assembly No. FC310155

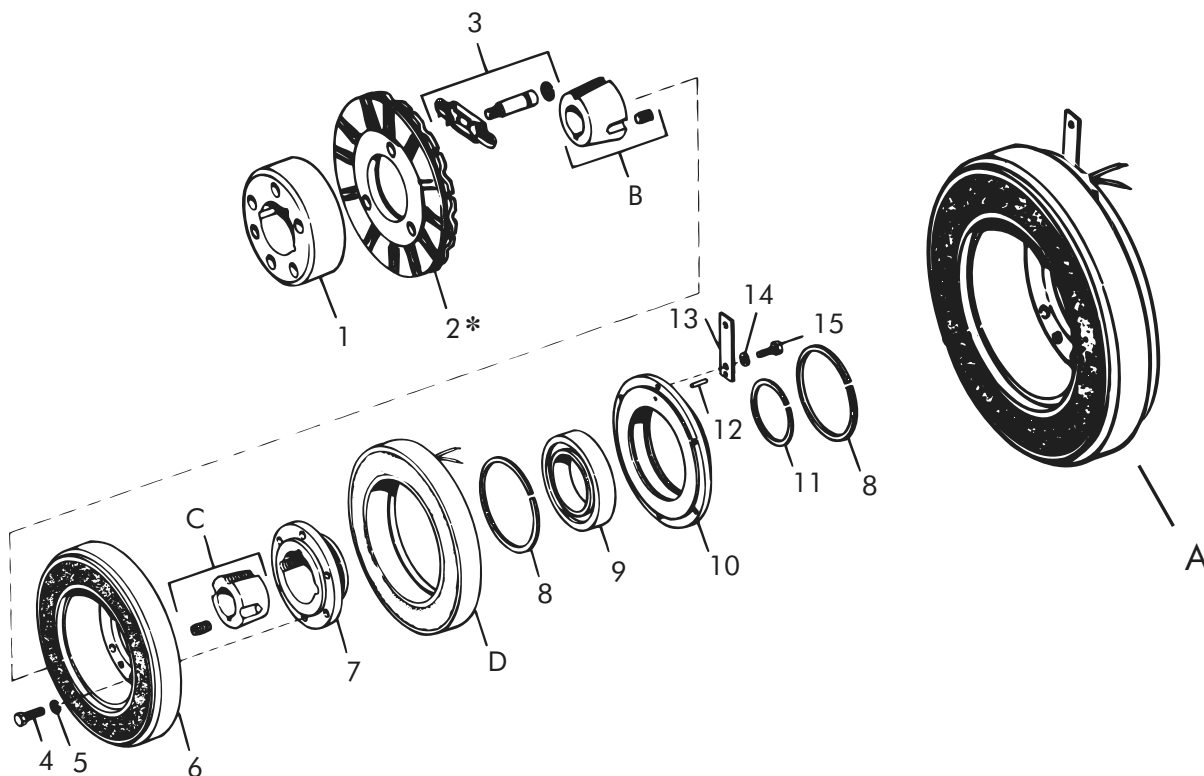
| | Armature Hub | Armature Plate Assembly | (2517) Taper Bushing | Bearing Mounted Rotor & Field | (2012) Taper Bushing | Ajusto-gap® Accessory |
|----------|--------------|-------------------------|----------------------|-------------------------------|----------------------|-----------------------|
| 24 Volts | 310450 | 310380 | 326039-XX | 310773 | 326167-XX | 326075 |
| 90 Volts | 310450 | 310380 | 326039-XX | 310774 | 326167-XX | 326075 |

To order, specify: 1, Armature Hub
1, Taper Bushing (2517) of required Bore size
1, Bearing Mounted Rotor and Field of required Voltage

1, Armature Plate Assembly
1, Taper Bushing (2012) of required Bore size
1, Ajusto-gap® Accessory

For controls, see Section K.

Clutch Coupling – Replacement Parts



Replacement Parts

| Item | Qty. | Description | Part No. | Item | Qty. | Description | Part No. |
|------|------|---------------------------|----------|------|------|---------------------------------|-----------|
| 1 | 1 | Armature Hub | 310450 | 14 | 6 | Lock Washer | DY-4366 |
| 2 | 1 | Armature Plate Assembly | 310380 | 15 | 6 | Screw | DY-14764 |
| 3 | 1 | Adjusto-gap® Accessory | 326075 | A | 1 | Bearing Mounted Rotor and Field | |
| 3a | 3 | Drive Pin | 326008 | | | 24 Volts | 310773 |
| 3b | 3 | Spring | 326149 | | | 90 Volts | 310774 |
| 3c | 3 | Retaining Ring (External) | DY-10572 | B | 1 | Taper Bushing (2517) | 326039-XX |
| 4 | 6 | Hex Head Cap Screw | DY-211 | C | 1 | Taper Bushing (2012) | 326167-XX |
| 5 | 6 | Lock Washer | DY-18 | D | 1 | Field | |
| 6 | 1 | Rotor Assembly | 310820-2 | | | 24 Volts | 310733-3 |
| 7 | 1 | Rotor Hub | 310753 | | | 90 Volts | 310734-3 |
| 8 | 2 | Retaining Ring (Internal) | DY-11574 | | | | |
| 9 | 1 | Bearing | DY-15269 | | | | |
| 10 | 1 | Field Mounting Hub | 310752-1 | | | | |
| 11 | 1 | Retaining Ring (External) | DY-15270 | | | | |
| 12 | 1 | Roll Pin | DY-13213 | | | | |
| 13 | 1 | Support Arm | 326549 | | | | |

* Current design armatures are solid.