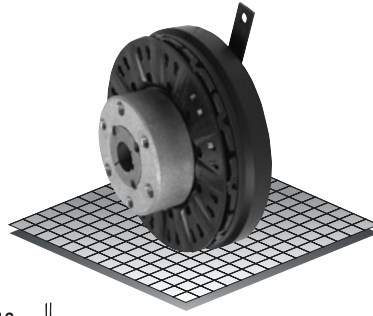


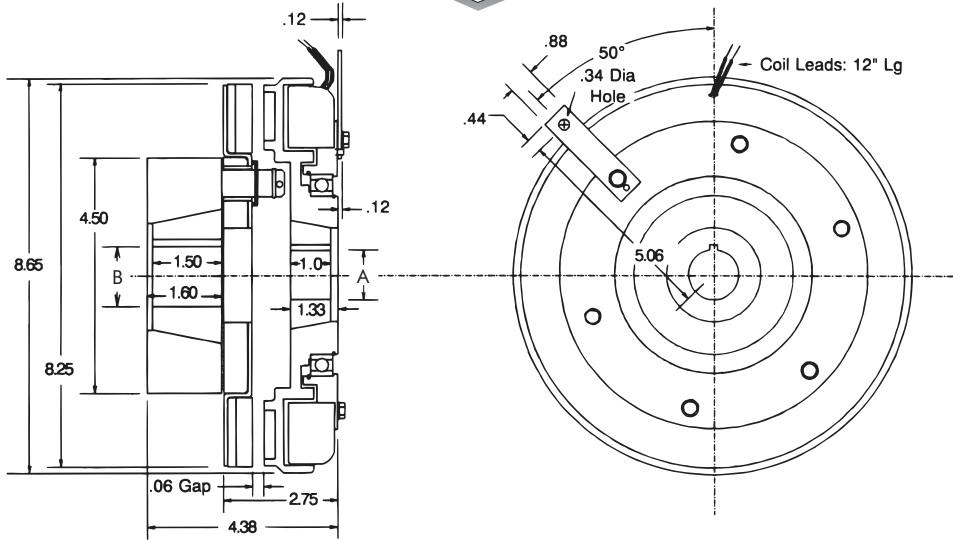
# Clutch Coupling

Model

● 308



- ▶ Stationary Field
- ▶ Bearing Mounted
- ▶ Pin Drive



## Bushing 1615

Bore "B"	Keyway	Part No.
1/2"	.500 .125 x .062	326015 - 1
9/16"	.562 .125 x .062	326015 - 2
5/8"	.625 .187 x .093	326015 - 3
11/16"	.687 .187 x .093	326015 - 4
3/4"	.750 .187 x .093	326015 - 5
13/16"	.812 .187 x .093	326015 - 6
7/8"	.875 .187 x .093	326015 - 7
15/16"	.937 .250 x .125	326015 - 8
1"	1.000 .250 x .125	326015 - 9
1-1/16"	1.062 .250 x .125	326015 - 10
1-1/8"	1.125 .250 x .125	326015 - 11
1-3/16"	1.187 .250 x .125	326015 - 12
1-1/4"	1.250 .250 x .125	326015 - 13
1-5/16"	1.312 .312 x .156	326015 - 14
1-3/8"	1.375 .312 x .156	326015 - 15
1-7/16"	1.437 .375 x .187	326015 - 16
1-1/2"	1.500 .375 x .187	326015 - 17
1-9/16"	1.562 .375 x .187	326015 - 18
1-5/8"	1.625 .375 x .187	326015 - 19
*1-3/8"	1.375 .375 x .125	326015 - 20
*1-5/8"	1.625 .375 x .125	326015 - 21

## Bushing 1610

Bore "A"	Keyway	Part No.
1/2"	.500 .125 x .062	326642 - 1
9/16"	.562 .125 x .062	326642 - 2
5/8"	.625 .187 x .093	326642 - 3
11/16"	.687 .187 x .093	326642 - 4
3/4"	.750 .187 x .093	326642 - 5
13/16"	.812 .187 x .093	326642 - 6
7/8"	.875 .187 x .093	326642 - 7
15/16"	.937 .250 x .125	326642 - 8
1"	1.000 .250 x .125	326642 - 9
1-1/16"	1.062 .250 x .125	326642 - 10
1-1/8"	1.125 .250 x .125	326642 - 11
1-3/16"	1.187 .250 x .125	326642 - 12
1-1/4"	1.250 .250 x .125	326642 - 13
1-5/16"	1.312 .312 x .156	326642 - 14
1-3/8"	1.375 .312 x .156	326642 - 15
1-7/16"	1.437 .375 x .187	326642 - 16
1-1/2"	1.500 .375 x .187	326642 - 17
1-9/16"	1.562 .375 x .187	326642 - 18
1-5/8"	1.625 .375 x .187	326642 - 19

## Technical Data and Torque (In. Lb.)

Model No.	Wt. Lbs.	Static Torque in. lb.	Max. Speed RPM	Coil Voltage vdc	*Rated Current amps	RPM									
						0	300	600	900	1200	1500	1800	2400	3000	3600
308	21.3	2100	3600	90	.57	2100	1848	1596	1428	1344	1260	1128	888	720	588

\* Rated Current for 90v.

Refer to Section M for torque and heat dissipation curves. Customer must maintain concentricity between shafts within .010.

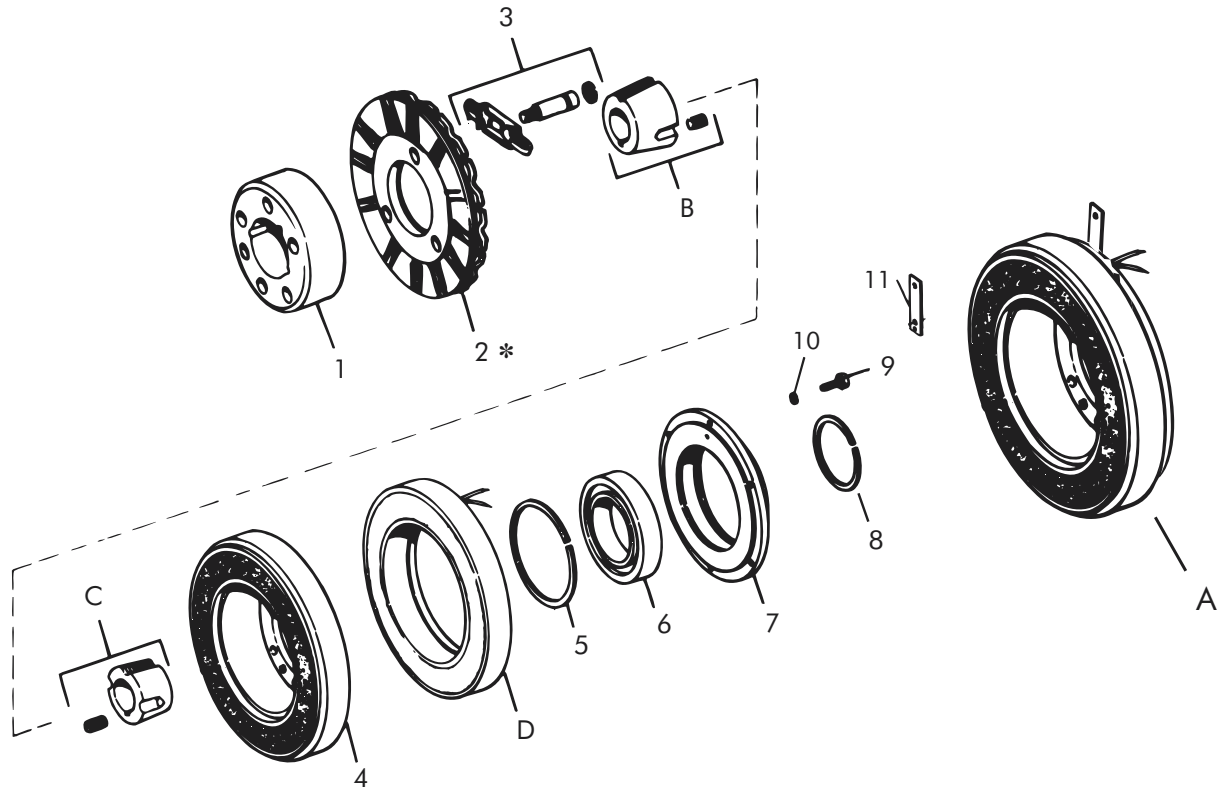
## Order Parts for Assembly No. FC308155-3

	Armature Hub	Armature Plate Assembly	(1615) Taper Bushing	Bearing Mounted Rotor & Field	(1610) Taper Bushing	Ajusto-gap® Accessory
24 Volts	308450	308380	326015-XX	308773	326642-XX	326075
90 Volts	308450	308380	326015-XX	308774	326642-XX	326075

To order, specify: 1, Armature Hub 1, Ajusto-gap® Accessory  
 1, Taper Bushing (1615) of required Bore size 1, Taper Bushing (1610) of required Bore size  
 1, Armature Plate Assembly  
 1, Bearing Mounted Rotor and Field of required Voltage

For controls, see Section K.

# Clutch Coupling – Replacement Parts



## Replacement Parts

Item	Qty.	Description	Part No.	Item	Qty.	Description	Part No.
1	1	Armature Hub	308450	12	1	Pin (not shown)	RY-20094
2	1	Armature Plate Assembly	308380	A	1	Bearing Mounted Rotor and Field	
3	1	Adjusto-gap® Accessory	326075			24 Volts	308773
3a	3	Drive Pin	326008			90 Volts	308774
3b	3	Spring	326149	B	1	Taper Bushing (1615)	326015-XX
3c	3	Retaining Ring (External)	DY-10572	C	1	Taper Bushing (1610)	326642-XX
4	1	Rotor Assembly	308820-8	D	1	Field	
5	1	Retaining Ring (Internal)	RY-20042			24 Volts	308733-4
6	1	Bearing	RY-20047			90 Volts	308734-4
7	1	Field Mounting Hub	308752				
8	1	Retaining Ring (External)	RY-20037				
9	6	Screw	DY-14764				
10	6	Washers	DY-4366				
11	1	Support Arm	326549				

\* Current design armatures are solid.