

Shaft Input Modules

Open Drip Proof

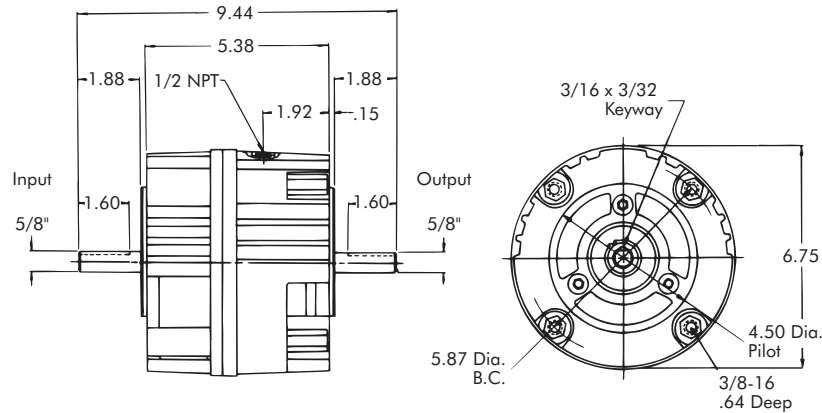
Models

- CBP-56-22-SI
- CBP-56-32-SI
- CBP-56-22-SIB
- CBP-56-32-SIB

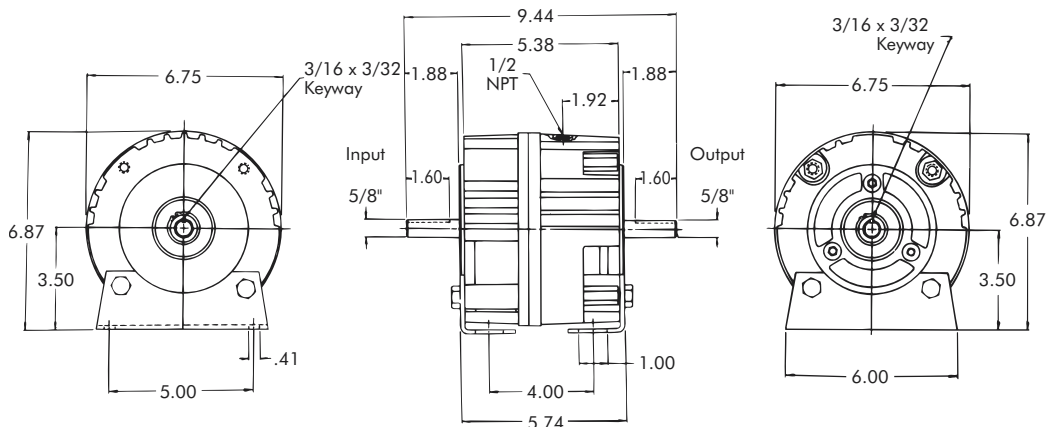


- ▶ Factory Assembled and Tested
- ▶ Spline Drive
- ▶ Shaft Input
- ▶ Mounting Base (SIB)

SI Clutch-Brake Module



SIB Clutch-Brake Module



Technical Data and Torque (In. Lb.)

| Model No. | Wt. Lbs. | Static Torque in. lb. | Max. Speed RPM | Coil Voltage vdc | * Rated Current amps | RPM | | | | | | | | | |
|---------------|----------|-----------------------|----------------|------------------|----------------------|-----|-----|-----|-----|------|------|------|------|------|------|
| | | | | | | 0 | 300 | 600 | 900 | 1200 | 1500 | 1800 | 2400 | 3000 | 3600 |
| CBP-56-22-SI | 16 | 264 | 3600 | 90 | .18 | 264 | 216 | 192 | 180 | 168 | 156 | 156 | 144 | 132 | 120 |
| CBP-56-22-SIB | 16 | | | | | | | | | | | | | | |
| CBP-56-32-SI | 16 | 384 | 3600 | 90 | .18 | 384 | 312 | 276 | 264 | 240 | 228 | 228 | 216 | 192 | 168 |
| CBP-56-32-SIB | 16 | | | | | | | | | | | | | | |

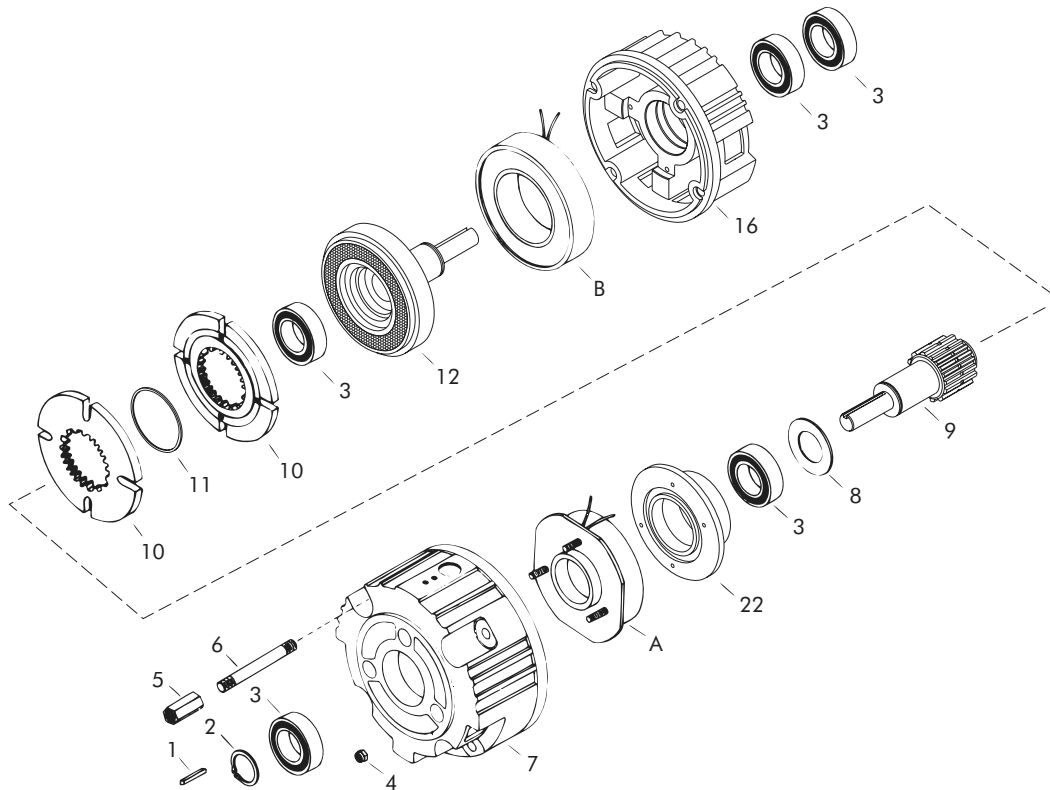
* Rated Current for 90v

Refer to Section M for torque and heat dissipation curves.

| | SI Module No. | | SIB Module No. | |
|------|---------------|--------------|----------------|---------------|
| | CBP-56-22-SI | CBP-56-32-SI | CBP-56-22-SIB | CBP-56-32-SIB |
| 24 V | 304194-42 | 304294-42 | 304194-50 | 304294-50 |
| 90 V | 304194-43 | 304294-43 | 304194-51 | 304294-51 |

To order use number shown in table above: example – for 90 Volt CBP-56-32-SI, order 304294-43.

For controls, see Section K.



Replacement Parts

| Item | Qty. | Description | Model No. | | | |
|------|------|-----------------------|---------------------|--------------|---------------|---------------|
| | | | Clutch-Brake Module | | | |
| | | | CBP-56-22-SI | CBP-56-32-SI | CBP-56-22-SIB | CBP-56-32-SIB |
| 1 | 2 | Input/Output Key | DY-11212 | DY-11212 | DY-11212 | DY-11212 |
| 2 | 2 | Retaining Ring | DY-1102 | DY-1102 | DY-1102 | DY-1102 |
| 3 | 4 | Bearing | DY-11500 | DY-11500 | DY-11500 | DY-11500 |
| 4 | 3 | Locknut | RY-20113 | RY-20113 | RY-20113 | RY-20113 |
| 5 | 4 | Hex Nut | 326850 | 326850 | 326850 | 326850 |
| 6 | 4 | Stud | 326851-3 | 326851-3 | 326851-3 | 326851-3 |
| 7 | 1 | Brake End Bell | 650337-3 | 650337-3 | 650337-3 | 650337-3 |
| 8 | 1 | Teflon Washer | 326960 | 326960 | 326960 | 326960 |
| 9 | 1 | Output Shaft and Hub | 650340-7 | 650340-7 | 650340-7 | 650340-7 |
| 10 | 2 | Armature | 304396-8 | 304396-8 | 304396-8 | 304396-8 |
| 11 | 3 | Retaining Ring | RY-20310 | RY-20310 | RY-20310 | RY-20310 |
| 12 | 1 | Input Shaft and Rotor | 304528-5 | 304528-3 | 304528-5 | 304528-3 |
| 13 | 2 | Retaining Ring (n/s) | DY-10860 | DY-10860 | DY-10860 | DY-10860 |
| 16 | 1 | Clutch End Bell | 650389 | 650389 | 650389 | 650389 |
| 17 | 3 | Cap Screw | RY-20374 | RY-20374 | RY-20374 | RY-20374 |
| 18 | 3 | Lock Washer | DY-1548 | DY-1548 | DY-1548 | DY-1548 |
| 19 | 2 | Base (SIB Only) (n/s) | – | – | 650364-6 | 650364-6 |
| 20 | 4 | Cap Screw (n/s) | – | – | DY-12710 | DY-12710 |
| 21 | 4 | Lock Washer (n/s) | – | – | DY-4472 | DY-4472 |
| 22 | 1 | Bearing Support | – | – | – | – |
| 23 | 3 | Button Screw (n/s) | – | – | – | – |
| A | 1 | Brake Field | | | | |
| | | 24 Volt DC | 304353-14 | 304353-6 | 304353-14 | 304353-6 |
| | | 90 Volt DC | 304354-14 | 304354-6 | 304354-14 | 304354-6 |
| B | 1 | Clutch Field | | | | |
| | | 24 Volt DC | 304333-11 | 304333-12 | 304333-11 | 304333-12 |
| | | 90 Volt DC | 304334-11 | 304334-12 | 304334-11 | 304334-12 |