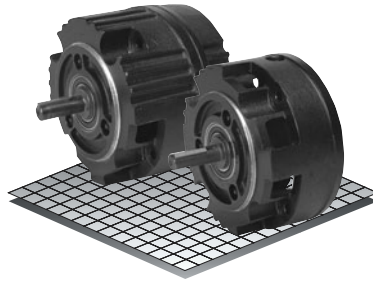


Clutch-Brake Modules

Open Drip Proof

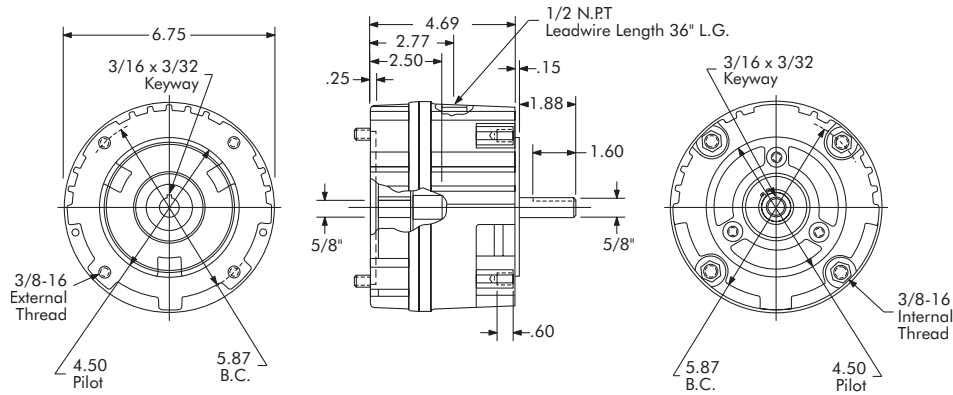
Models

- CBP-56-22
- CBP-56-32
- CP-56-22
- CP-56-32
- BP-56-22
- BP-56-32

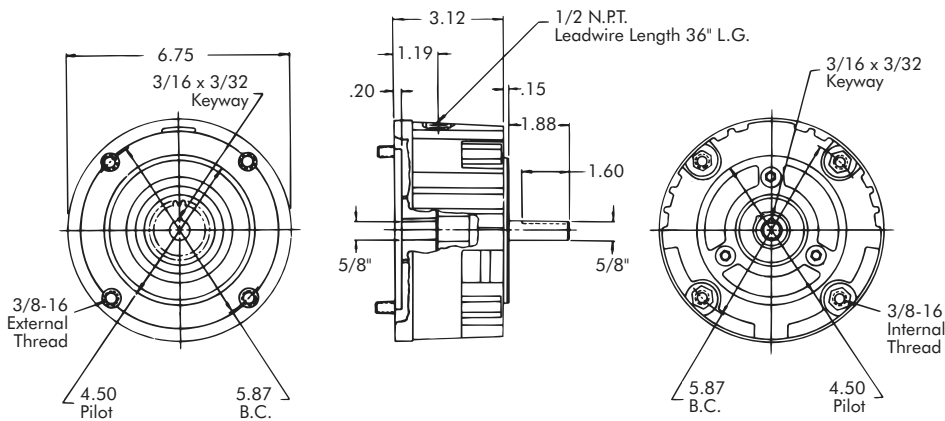


- ▶ Factory Assembled and Tested
- ▶ Spline Drive
- ▶ 56C Flange

Clutch-Brake Module or Clutch Module



Brake Module



Technical Data and Torque (In. Lb.)

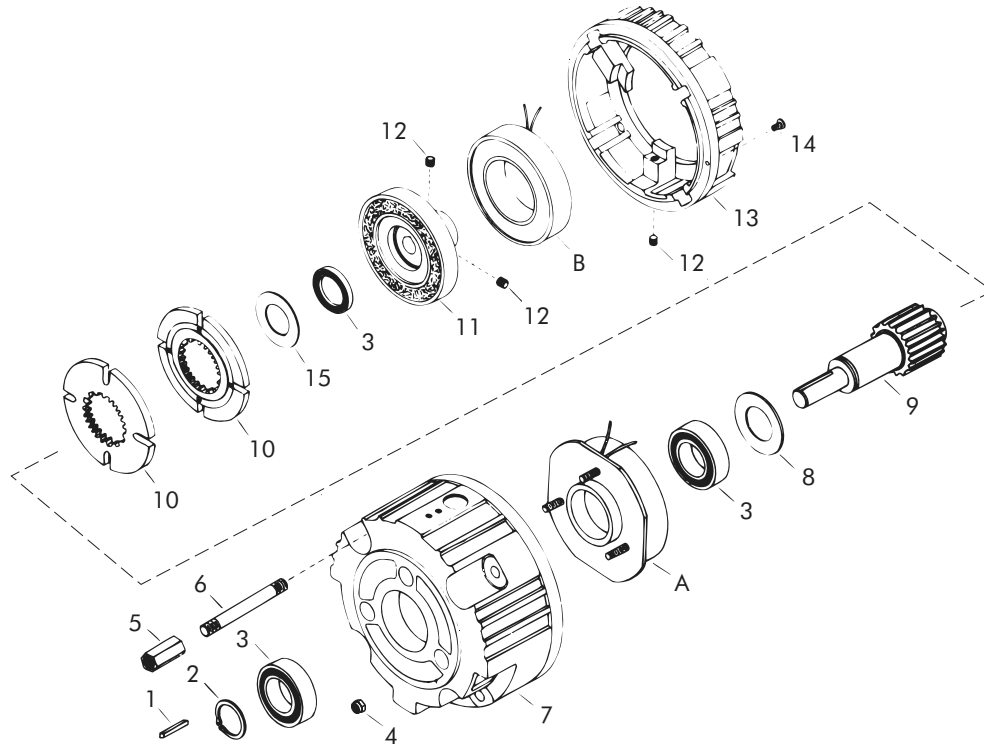
| Model No. | Wt. Lbs. | Static Torque in. lb. | Max. Speed RPM | Coil Voltage vdc | * Rated Current amps | RPM | | | | | | | | | |
|-----------|----------|-----------------------|----------------|------------------|----------------------|-----|-----|-----|-----|------|------|------|------|------|------|
| | | | | | | 0 | 300 | 600 | 900 | 1200 | 1500 | 1800 | 2400 | 3000 | 3600 |
| CBP-56-22 | 16 | 264 | 3600 | 90 | .18 | 264 | 216 | 192 | 180 | 168 | 156 | 156 | 144 | 132 | 120 |
| CP-56-22 | 12 | | | | | | | | | | | | | | |
| BP-56-22 | 8 | | | | | | | | | | | | | | |
| CBP-56-32 | 16 | 384 | 3600 | 90 | .18 | 384 | 312 | 276 | 264 | 240 | 228 | 228 | 216 | 192 | 168 |
| CP-56-32 | 12 | | | | | | | | | | | | | | |
| BP-56-32 | 8 | | | | | | | | | | | | | | |

* Rated Current for 90v

Refer to Section M for torque and heat dissipation curves.

| | Model No. | | | | | |
|----------|-----------|-----------|-----------|-----------|-----------|-----------|
| | CBP-56-22 | CBP-56-32 | CP-56-22 | CP-56-32 | BP-56-22 | BP-56-32 |
| 12 Volts | 304194-26 | - | - | - | - | - |
| 24 Volts | 304194-27 | 304294-27 | 304196-27 | 304296-27 | 304195-27 | 304295-27 |
| 90 Volts | 304194-28 | 304294-28 | 304196-28 | 304296-28 | 304195-28 | 304295-28 |

To order use number shown in table above: example – for 90 volt CBP-56-22, order 304194-28.
For controls, see Section K.



Replacement Parts

| Item | Qty. | Description | Model No. | | | | | |
|------|------|-----------------------------|---------------------|-----------|---------------|-----------|--------------|-----------|
| | | | Clutch-Brake Module | | Clutch Module | | Brake Module | |
| | | | CBP-56-22 | CBP-56-32 | CP-56-22 | CP-56-32 | BP-56-22 | BP-56-32 |
| 1 | 1 | Output Key | DY-11212 | DY-11212 | DY-11212 | DY-11212 | DY-11212 | DY-11212 |
| 2 | 1 | Retaining Ring | DY-1102 | DY-1102 | DY-1102 | DY-1102 | DY-1102 | DY-1102 |
| 3 | 3 ● | Bearing | DY-11500 | DY-11500 | DY-11500 | DY-11500 | DY-11500 | DY-11500 |
| 4 | 3 | Nut | RY-20113 | RY-20113 | RY-20113 | RY-20113 | RY-20113 | RY-20113 |
| 5 | 4 | Hex Nut | 326850 | 326850 | 326850 | 326850 | 326850 | 326850 |
| 6 | 4 | Stud | 326851-4 | 326851-4 | 326851-4 | 326851-4 | 326851-3 | 326851-3 |
| 7 | 1 | Brake End Bell | 650337-3 | 650337-3 | 650337-3 | 650337-3 | 650337-4 | 650337-4 |
| 8 | 1 | Washer | 326960 | 326960 | 326960 | 326960 | - | - |
| 9 | 1 | Brake Shaft | 650340-7 | 650340-7 | 650340-7 | 650340-7 | 650376-1 | 650376-1 |
| 10 | 2 ▲ | Armature | 304396-8 | 304396-8 | 304396-8 | 304396-8 | 304396-8 | 304396-8 |
| 11 | 1 | Rotor | 304527-7 | 304527-12 | 304527-7 | 304527-12 | - | - |
| 12 | 2 | Setscrew | RY-20020 | RY-20020 | RY-20020 | RY-20020 | RY-20020 | RY-20020 |
| 13 | 1 | Clutch End Bell | 650356-4 | 650356-4 | 650356-4 | 650356-4 | - | - |
| 14 | 2 | Screw | DY-1120 | DY-1120 | DY-1120 | DY-1120 | - | - |
| 15 | 1 | Washer | 326961 | 326961 | 326961 | 326961 | - | - |
| 17 | 3 | Screw (not shown) | - | - | RY-20316 | RY-20316 | - | - |
| 18 | 1 | Bearing Support (not shown) | - | - | 304440-7 | 304440-7 | - | - |
| 19 | 3 | Screw (not shown) | DY-9980 | DY-9980 | DY-9980 | DY-9980 | - | - |
| 20 | 2 | Washer (not shown) | DY-10393 | DY-10393 | DY-10393 | DY-10393 | - | - |
| 21 | 2 ▲ | Retaining Ring (not shown) | RY-20310 | RY-20310 | RY-20310 | RY-20310 | RY-20310 | RY-20310 |
| A | 1 | Brake Field | | | | | | |
| | | 12 Volts | 304352-6 | 304352-11 | - | - | 304352-6 | 304352-11 |
| | | 24 Volts | 304353-6 | 304353-11 | - | - | 304353-6 | 304353-11 |
| | | 90 Volts | 304354-6 | 304354-11 | - | - | 304354-6 | 304354-11 |
| B | 1 | Clutch Field | | | | | | |
| | | 12 Volts | 304332-11 | 304332-12 | 304332-11 | 304332-12 | - | - |
| | | 24 Volts | 304333-11 | 304333-12 | 304333-11 | 304333-12 | - | - |
| | | 90 Volts | 304334-11 | 304334-12 | 304334-11 | 304334-12 | - | - |

● Qty. 1 on Brake Module
 ▲ Qty. 1 on Clutch Module and Brake Module